

Oncological results based on dissection approach

P. Th. Piechaud

R. Gaston

F. Curto - J. Benijts

Clinique St. Augustin
Bordeaux-France



RADICAL PROSTATECTOMY ONCOLOGIC RESULTS :

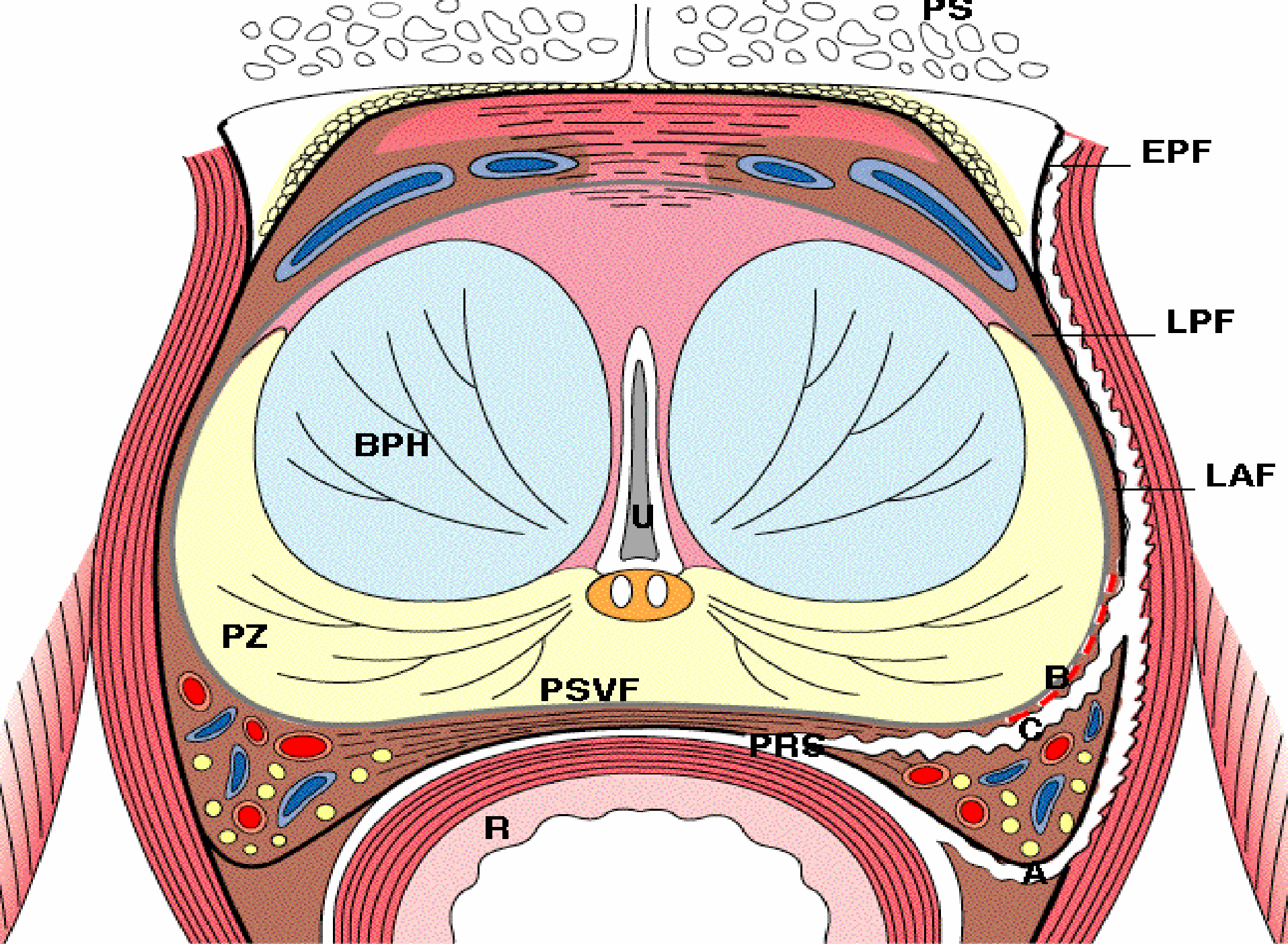
- PATHOLOGIC MARGINS
- BIOLOGICAL EVOLUTION

PATHOLOGIC MARGINS

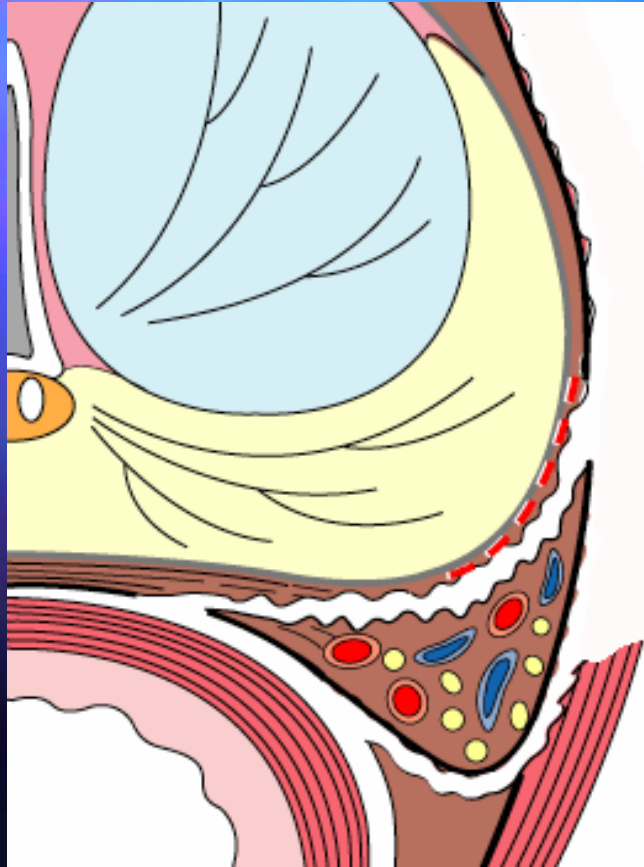
- PRE OPERATIVE STAGING
- OPERATIVE DISSECTION

OPERATIVE DISSECTION

- HOW TO DEFINE THE SPACE OF DISSECTION ?
 - EXTRA FASCIAL DISSECTION
 - INTER FASCIAL DISSECTION
 - INTRA FASCIAL DISSECTION



Fascial planes of dissection are numerous. What are the options ?

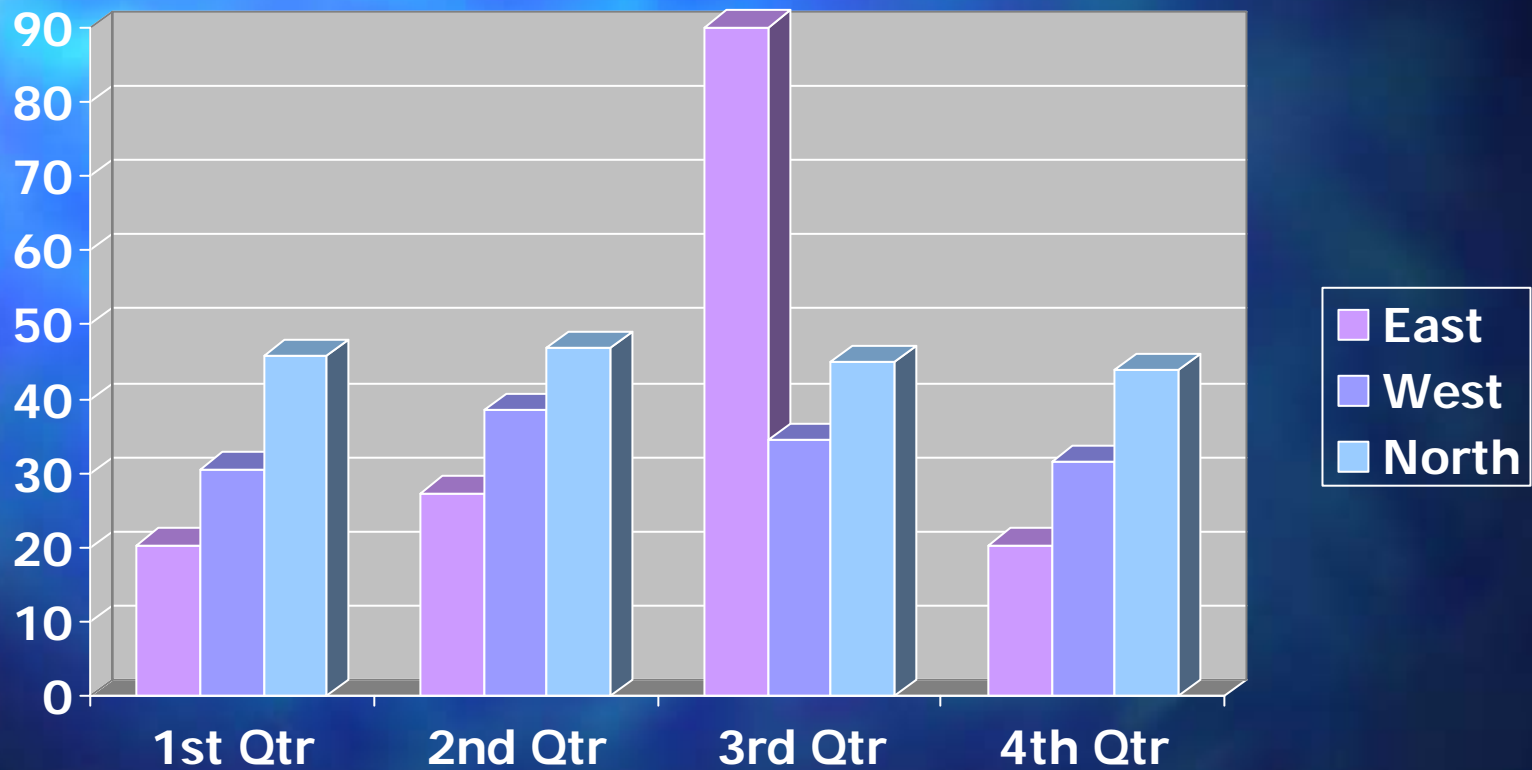


- INTRA FASCIAL
- INTER FASCIAL
- EXTRA FASCIAL

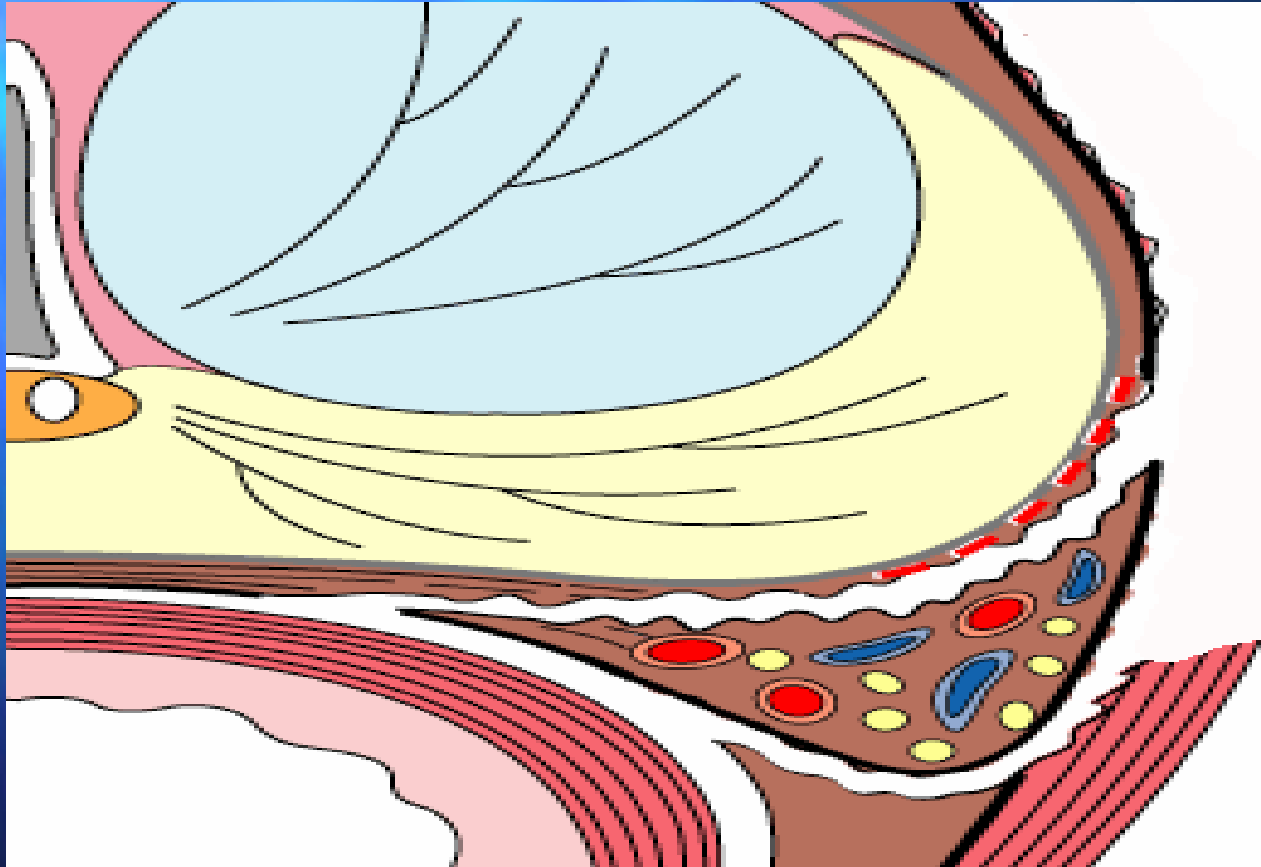
PATHOLOGIC MARGINS

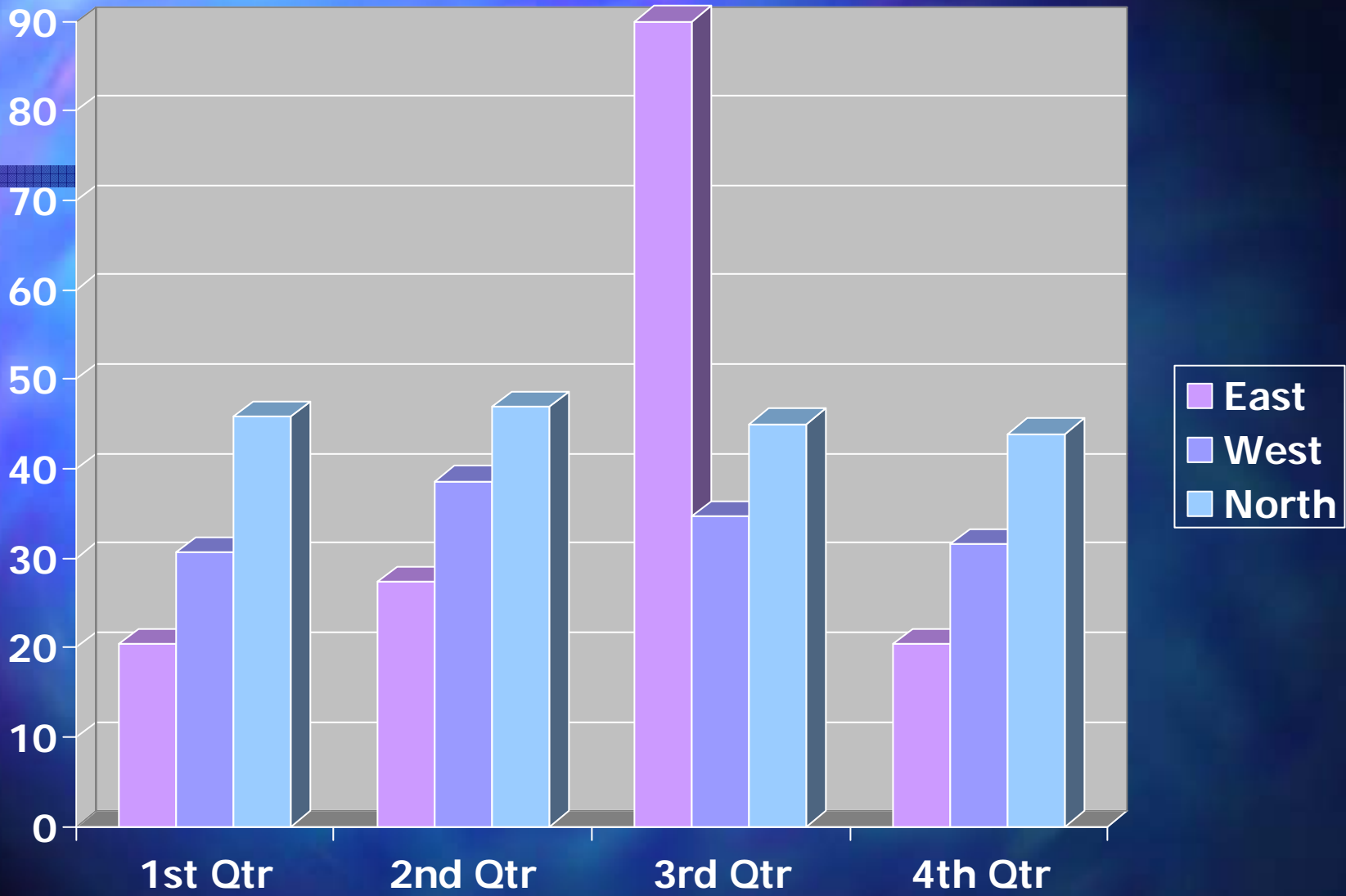
- BASAL
- POSTERO LATERAL
- APICAL

BLADDER NECK DISSECTION

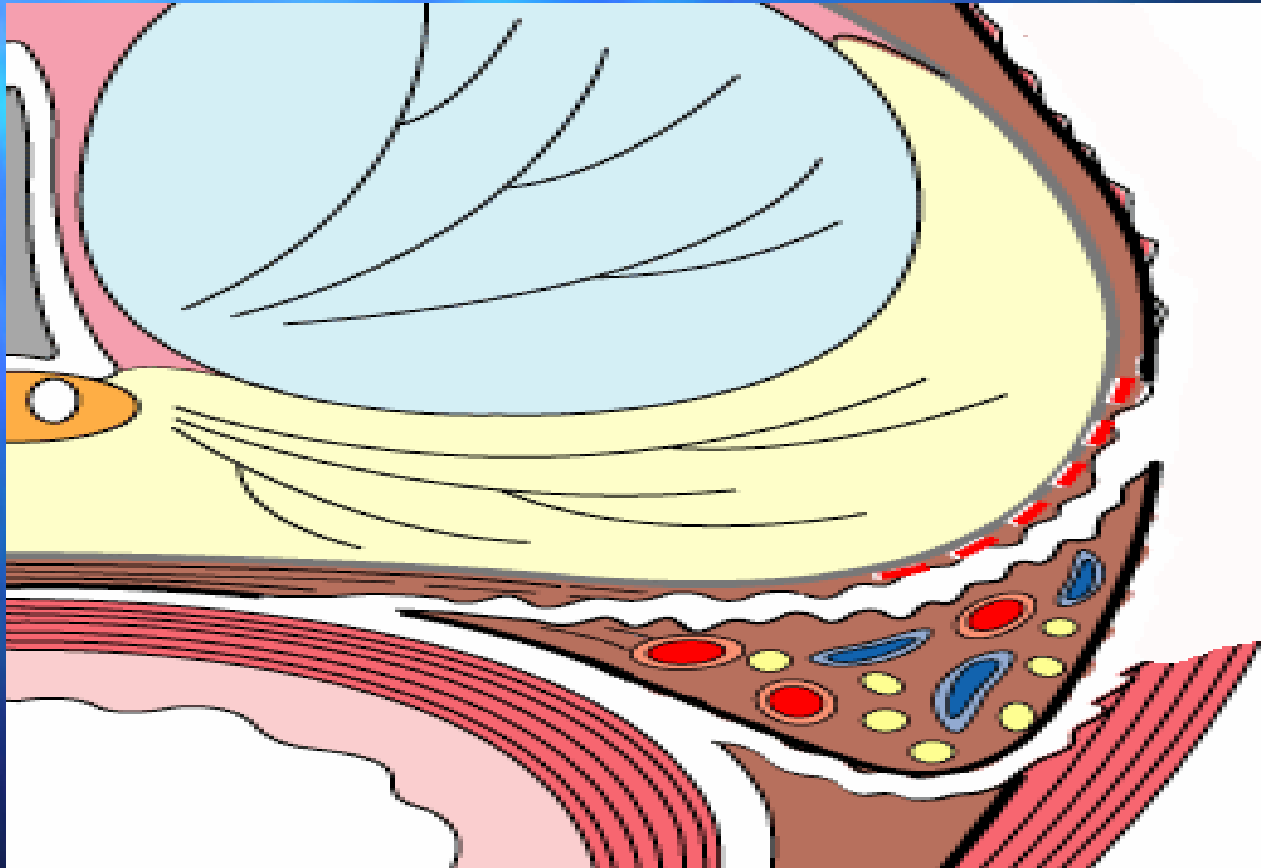


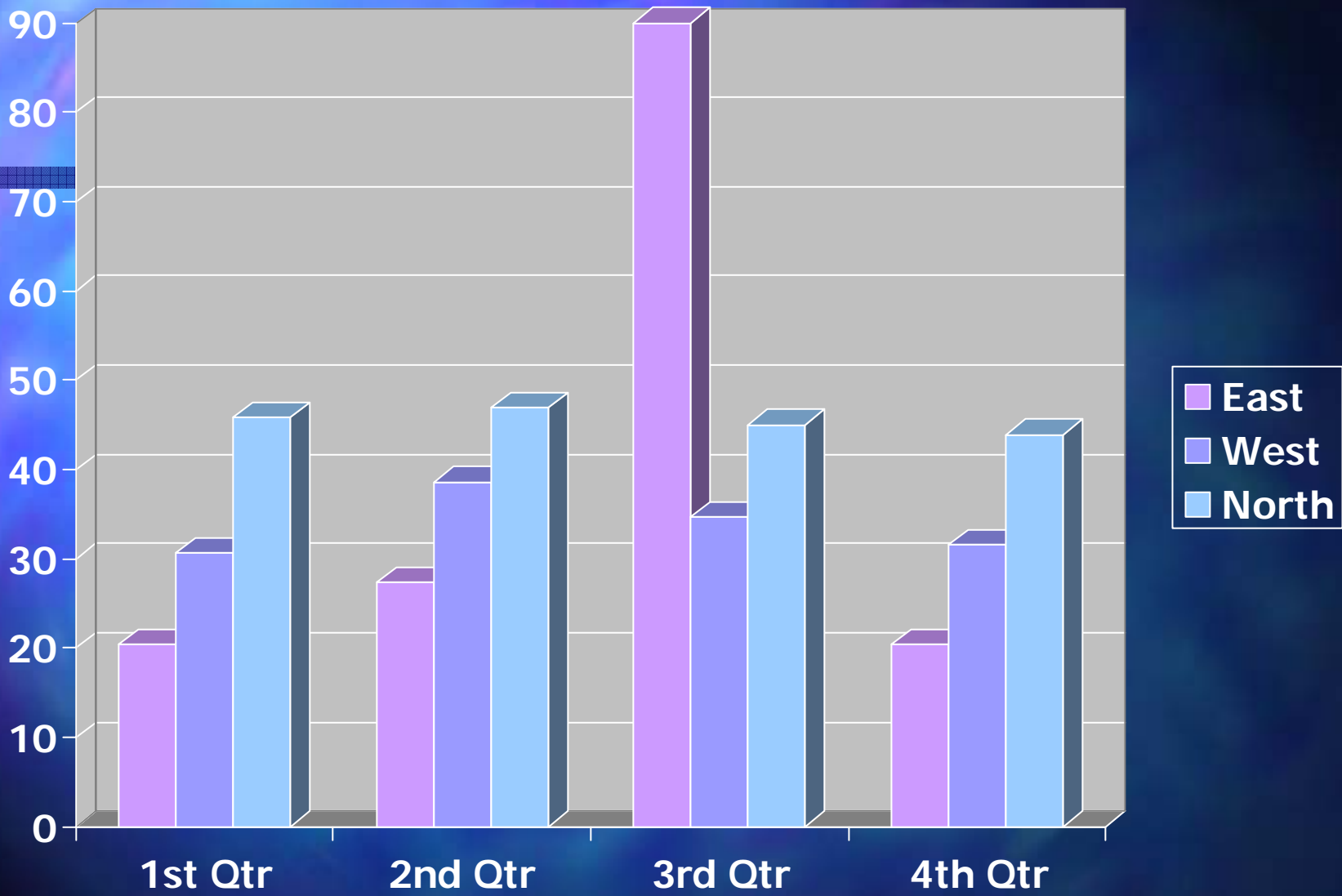
INTERFASCIAL DISSECTION



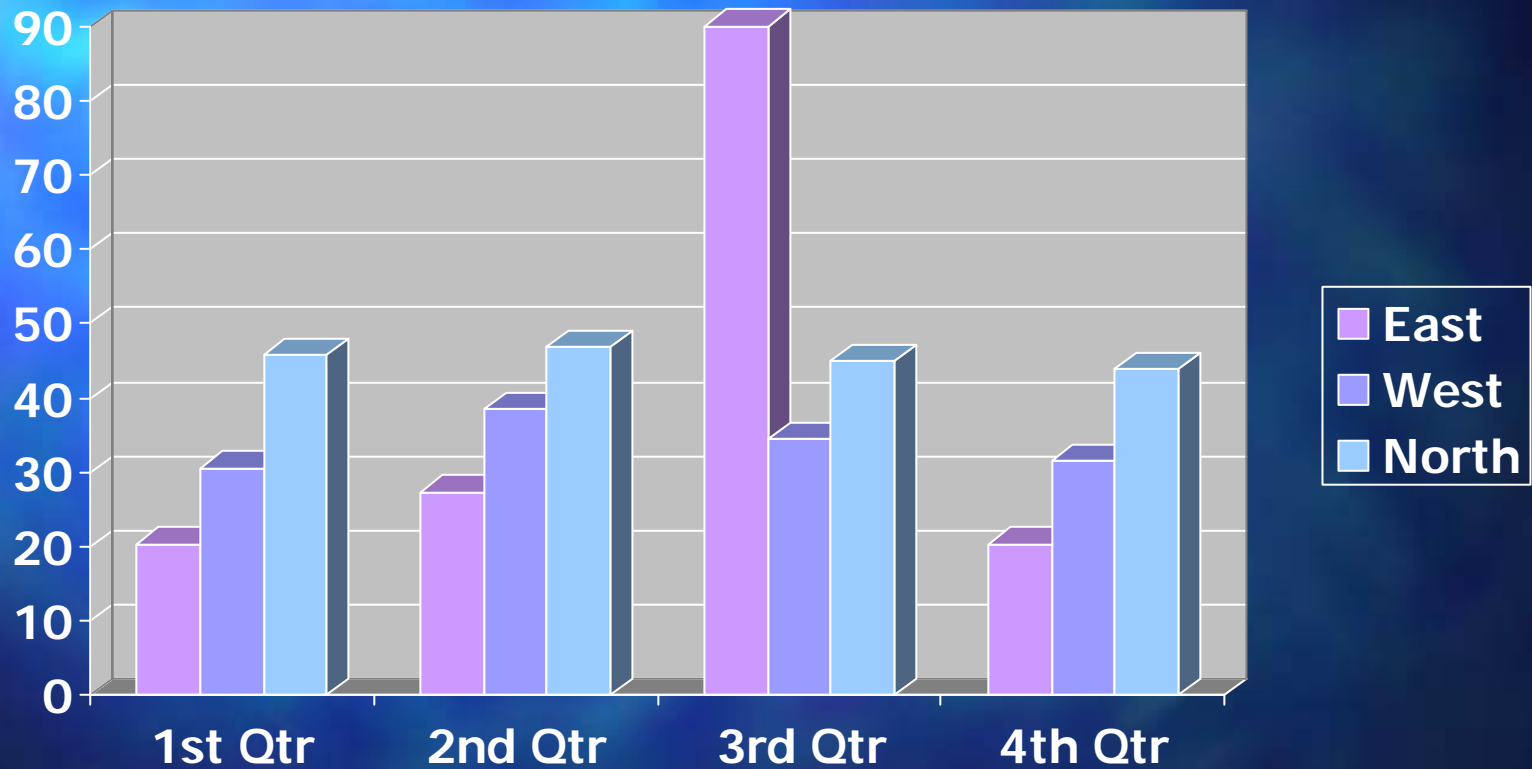


INTRAFASCIAL DISSECTION

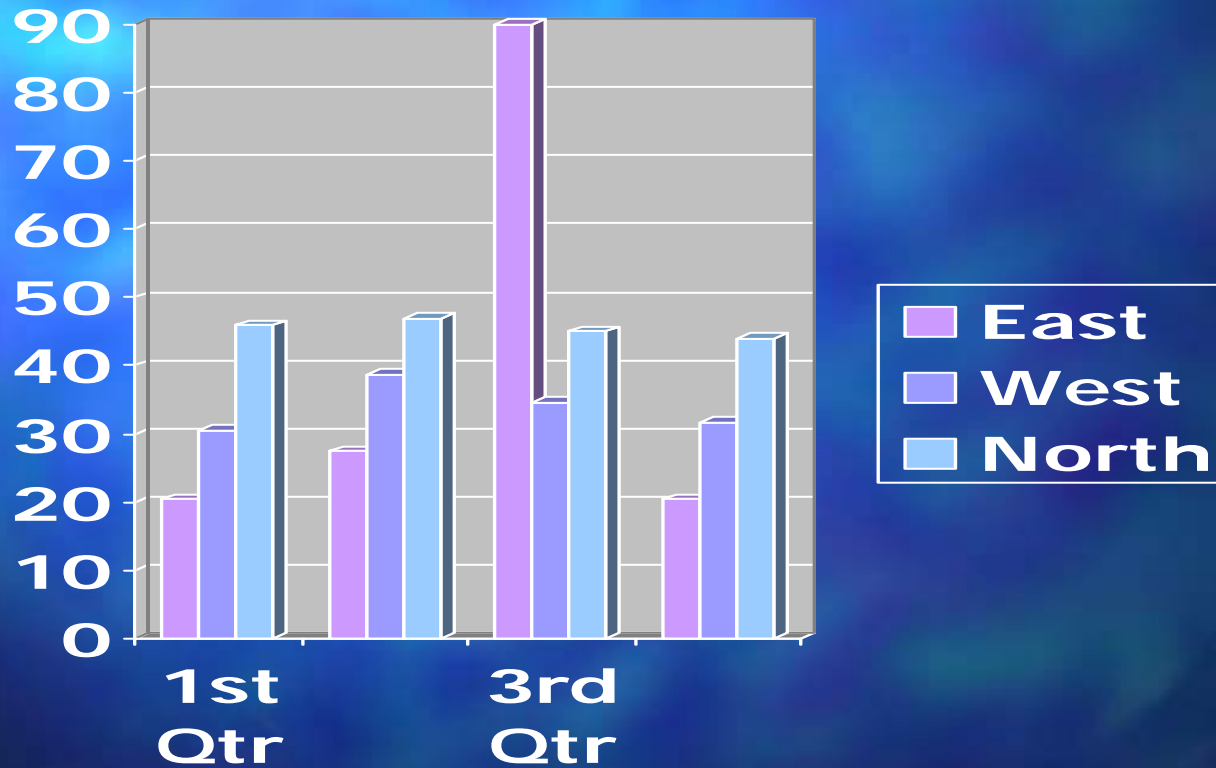




APICAL DISSECTION



ONCOLOGICAL RESULTS



ONCOLOGICAL RESULTS

St. Augustin: 630 Patients

Positive Margins

pT stage	Interfascial Dissection	Intrafascial Dissection
pT2a	0%	8%
pT2b	22%	35%
pT3	52%	59%

ONCOLOGICAL RESULTS

Montsouris: 100 Patients with IFS
Positive Margins

pT stage	Intrafascial Dissection without IFS	Intrafascial Dissection with IFS
pT2	26%	8%
pT3	83%	41%

CONCLUSION

Oncological results depend on:

- State of local development of tumor
- Preoperative tumoral characteristics
(PSA, Gleason score)
- Surgeon's experience

- **Fascial plane of dissection**

CONCLUSION 2

Intrafascial dissection:

- Increased risk of positive margins
- Exposure to biological recurrence
- Must be reserved to very selected patients