

THE PROMISE AND ADVANTAGES OF DISTANCE-LEARNING IN MATERNAL AND NEWBORN CARE



Professor DAVID WOODS
PERINATAL EDUCATION TRUST
CAPE TOWN SOUTH AFRICA



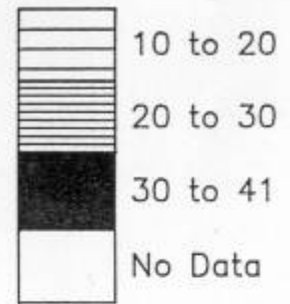




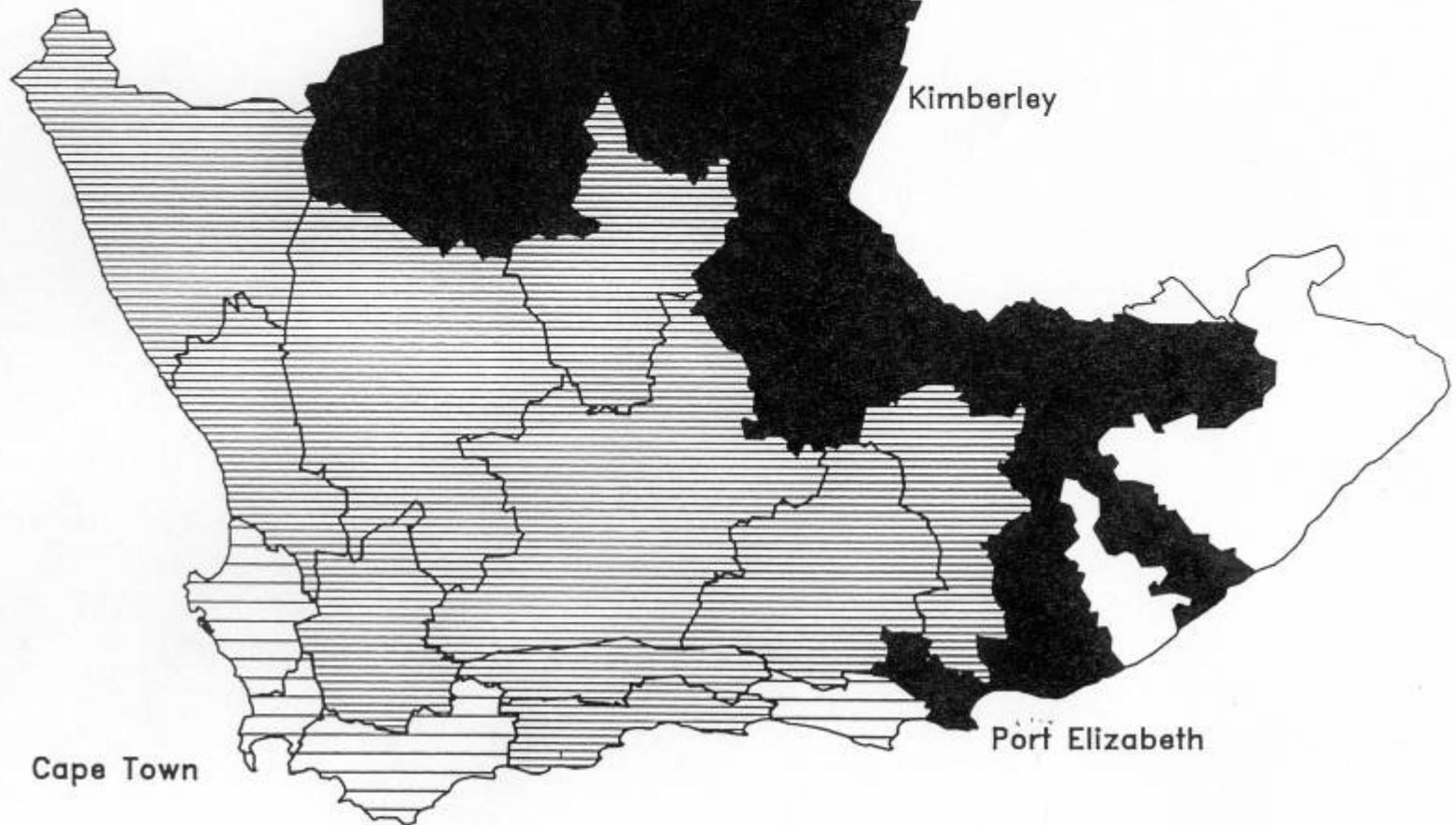




Perinatal mortality /1000 total births



Walvis Bay





TRADITIONAL TEACHING

- Expensive
- Formal tutors needed
- Centralised training
- Inappropriate
- Not used
- Limited numbers
- Does not help rural areas



EDUCATION METHODS

- Centralised teaching
- Outreach teaching

- Staff exchange
- Train-the-trainer
- CD-ROM
- Web-based interactive learning
- Telemedicine

INNOVATIVE LEARNING METHOD

- Manuals
- Self study at home
- Group learning
- Addressed the major problems
- Promote problem solving
- Affordable and sustainable
- No teacher required

**PERINATAL EDUCATION
PROGRAMME**



MANUAL I

MATERNAL CARE

**PERINATAL EDUCATION
PROGRAMME**



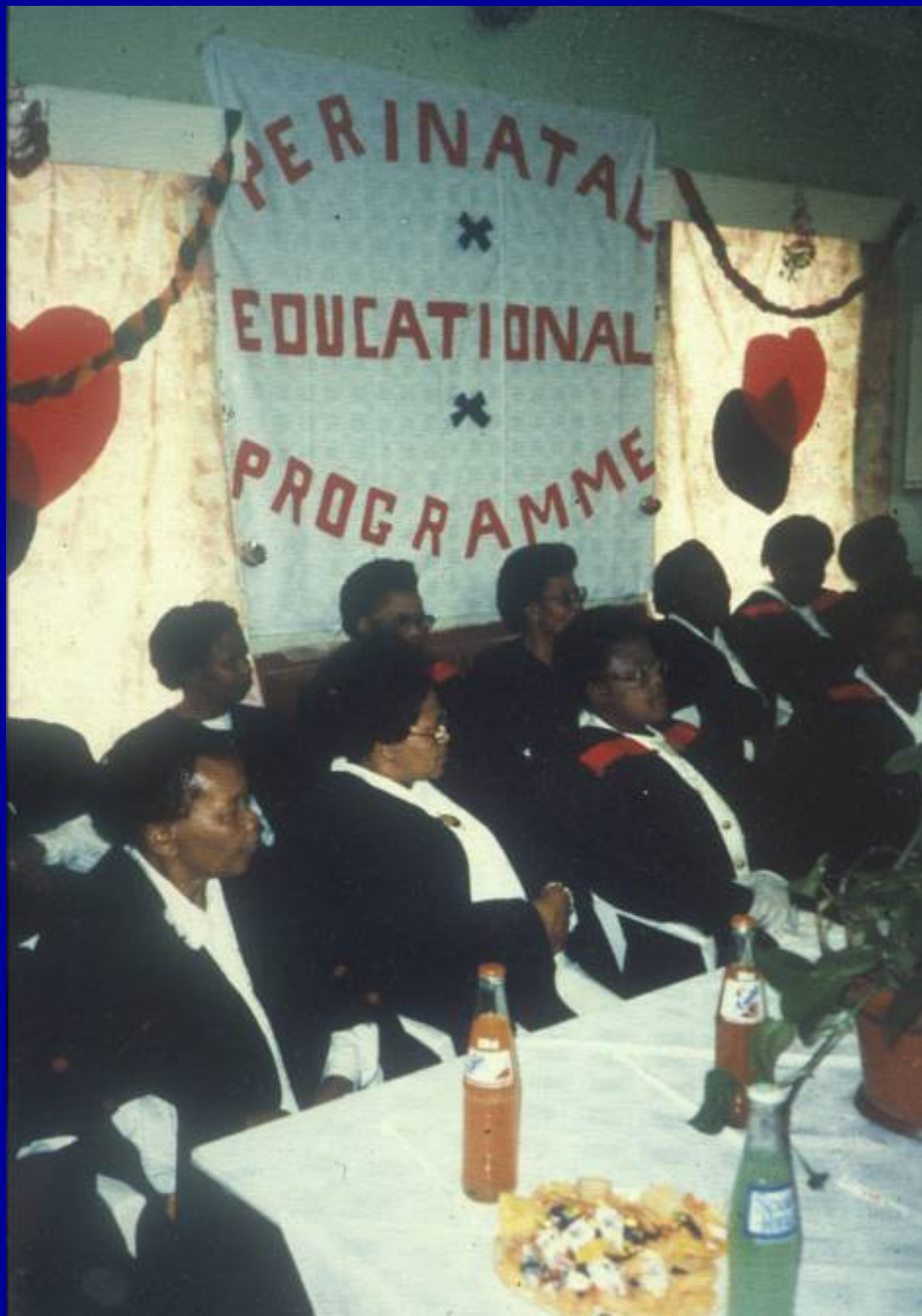
MANUAL II

NEWBORN CARE

PERINATAL EDUCATION PROGRAMME

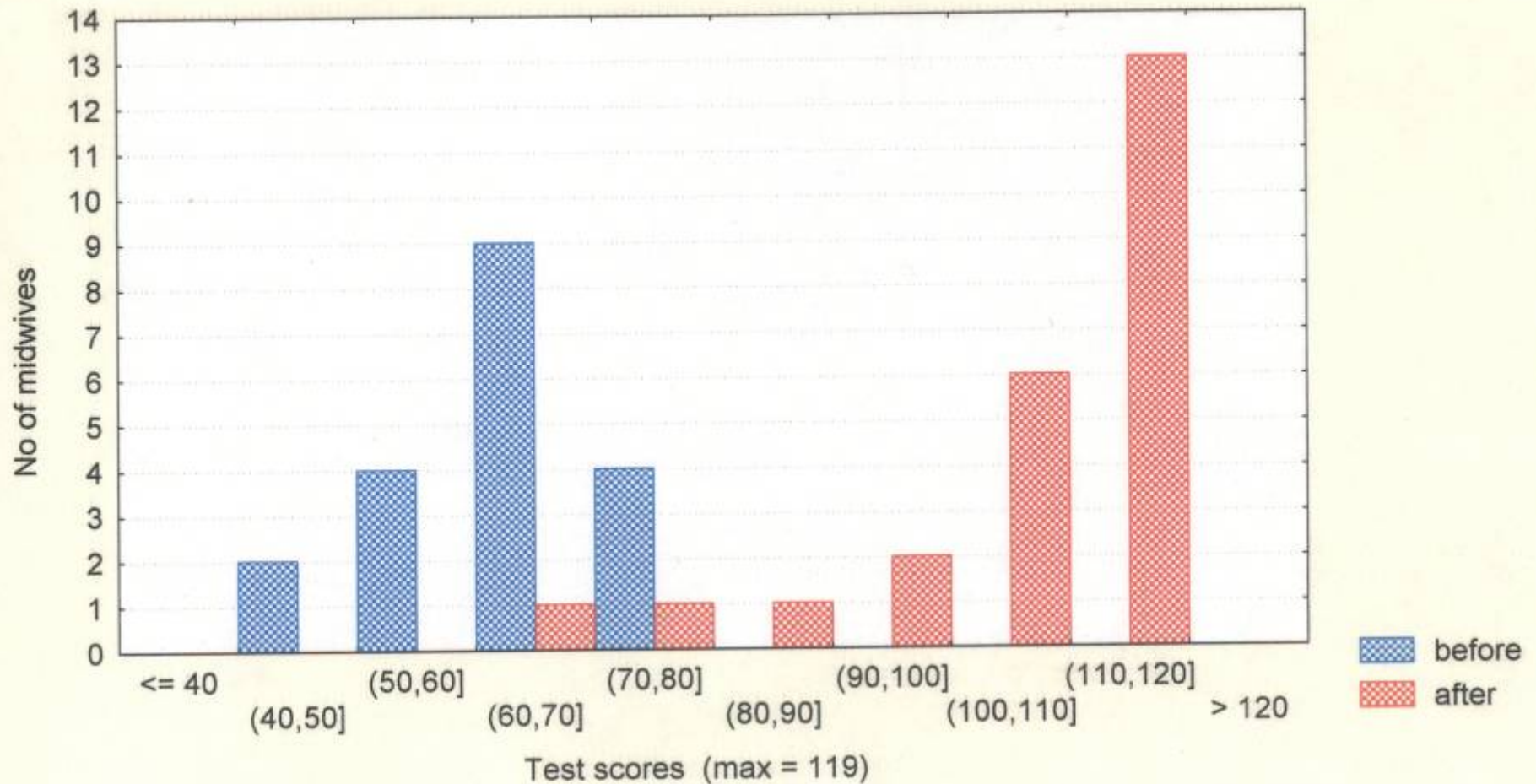
- 30 modules
- Theory sections
- Case studies
- Flow diagrams
- Multiple choice questions
- Clinical skills





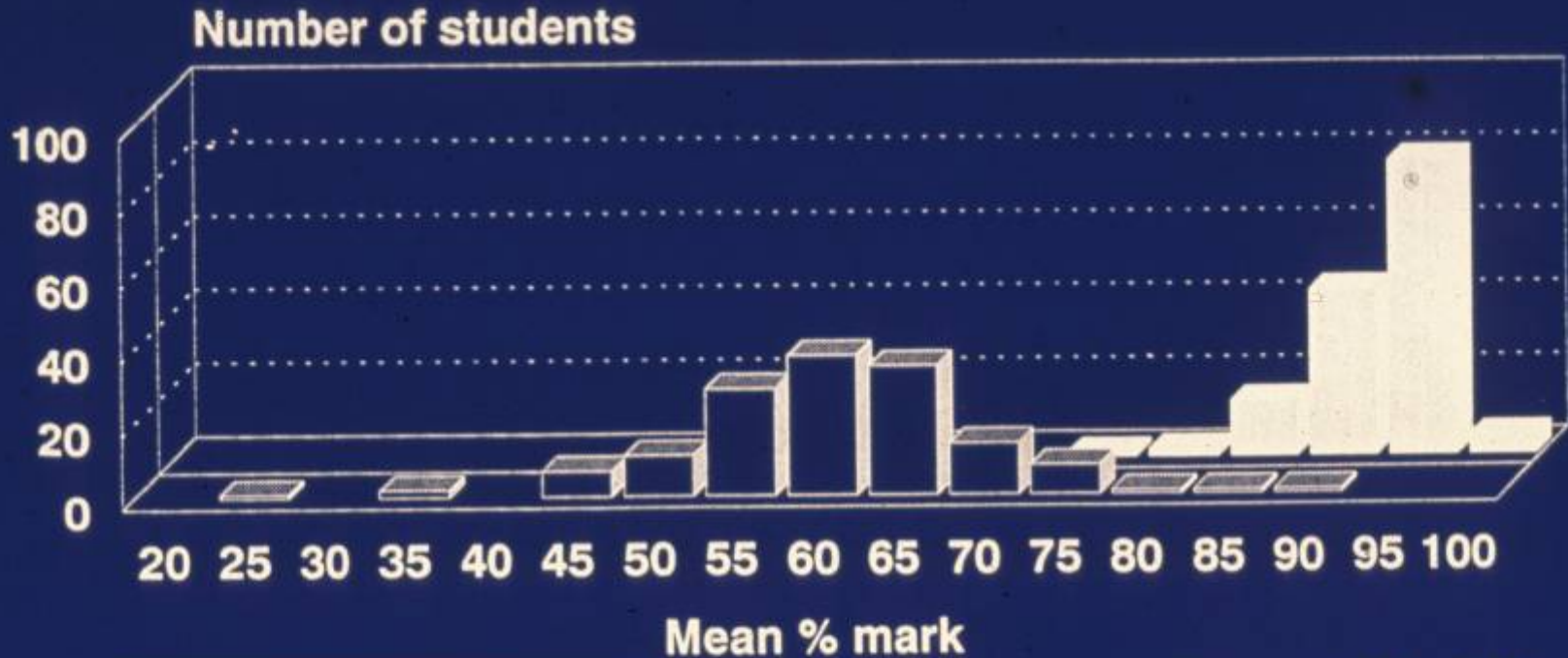
Cognitive Knowledge - Uitenhage Hospital

Before and after the use of the Programme



Pre-test vs Post-test

Comparison of mean pre- and post-test marks



Pre-test Post-test

Mean pre-test % = 63.1
Mean post-test % = 95.5
Mann Whitney-U test : $p < 0,00001$

SUPPLEMENTARY COURSES

- PERINATAL HIV/AIDS
- PRIMARY NEWBORN CARE
- PRIMARY MATERNAL CARE
- MOTHER AND BABY FRIENDLY CARE
- SAVING MOTHERS AND BABIES
- BIRTH DEFECTS

MANUALS USED

• Nurses/midwives	18 256
• Medical students	11 481
• Nursing students	3 798
• Doctors	3 253
• Other	411
Total:	37 199

OPEN WEBSITES

- www.pepcourse.co.za
- www.gfmer.ch/PEP/MCM_Home.htm
- www.gfmer.ch/PEP/NCM_Home.htm



CONTINUING EDUCATION THROUGH DISTANCE LEARNING:

THE PERINATAL EDUCATION PROGRAMME

- Assessment of PEP – Prof Theron
- Management of PEP – Dr Greenfield
- PEP in India – Dr Reddy

