

The WHO Reproductive Health Library (RHL)

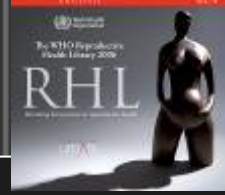
"informing about best practice in reproductive health"

What is RHL?

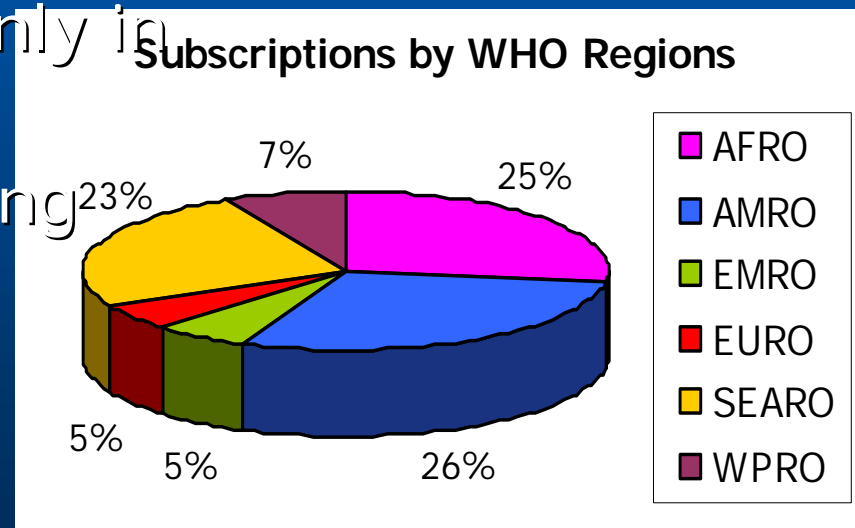


- RHL is an electronic library developed 1997 by the World Health Organization's programme to "Map Best Reproductive Health Practices"
(<http://www.who.int/reproductive-health/rhl>)
- a well-established resource enabling health care workers worldwide to keep up-to-date with the latest evidence in reproductive health
- includes the 'gold-standard' of clinical decision-making systematic reviews mainly from the Cochrane Collaboration

Publication & dissemination strategy



- published annually in English & Spanish on CDROM and the Internet version is updated on a regular basis (www.rhlibrary.com)
- gradual transition from mass distribution to a targeted dissemination
- > 15 000 subscribers mainly in Africa & Latin America
- free-of-charge in developing countries
- > 30 000 CDROMs/year



Target audience

- ✓ **Data shows that health workers are using RHL:**
 - as a reference source
 - continued medical education tool for healthcare providers
 - clinical decision making

Examples where RHL is used:

1. **Ghana**, Health Service, District Health Directorate
2. **Kenya**, WHO country coordinator for service guidance in Nairobi
3. **Nigeria**, National postgraduate workshops
4. **South Africa**, University of Cape Town, Faculty of Health Sciences, Undergraduate teaching
5. **South Africa**, East London, Effective Care Research Unit, Frere Maternity Hospital
6. **Thailand**, Khon Kaen University
7. **London** School of Hygiene and Tropical Medicine, postgraduate courses
8. **Liverpool**, School of Tropical Medicine
9. **Stockholm**, Karolinska Institute
10. **Guatemala**, OBGYN residents training



Focus

- *categorizes* treatments by what works and what doesn't – to implement or avoid an intervention
- *encourages* health workers to abandon ineffective or potentially harmful practices
- *helps to understand* and adopt research findings and bring them into practical context



EVALUATION

A multi-centre study was recently conducted in 40 hospitals in Mexico and Thailand to evaluate whether an active RHL dissemination strategy could improve obstetric practices to promote uptake of recommendations in RHL

Evidence-led obstetric care;

Core contents

- the full contents of some 130 systematic reviews
- published in user friendly formats; each review is complemented by a *plain language summary* and *practical guide* to show how the interventions could be implemented at different levels of care (i.e. primary care in low resource settings)



written by experts in the countries

Cochrane review



RHL commentary



practical guide



Contents

Topics of videos (11-15 min each):

- caesarean section techniques • labour
- companionship • vacuum extraction
- external cephalic version • breech delivery

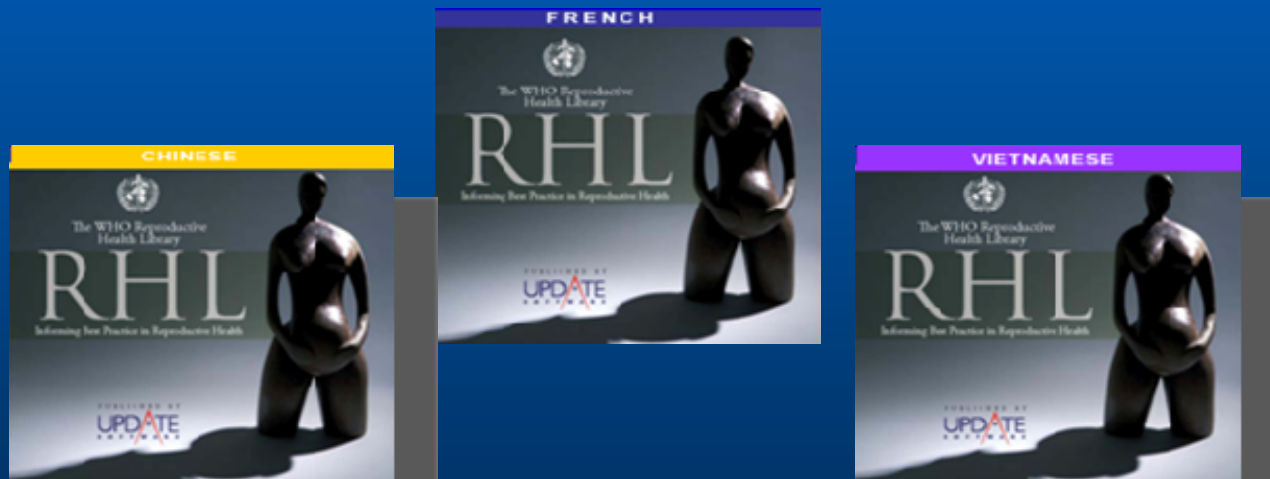


- audiovisual guides - 5 videos showing evidence based techniques
- a full training course on evidence based decision-making
- series from the Lancet, editorials and guidelines
- educational quizzes on each topic



Translations

- Chinese, French and Vietnamese versions are planned



- Spanish RHL since 1999

RHL network

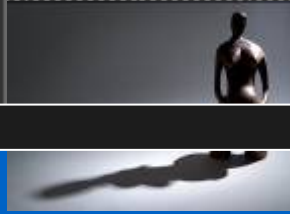
RHL Focal points:

Argentina, China
Cuba, Denmark,
Egypt,
Guatemala,
India, Kenya,
Mozambique,
Nigeria,
Peru, Philippines,
South Africa,
Tanzania,
Thailand,
UK, Uruguay



is composed of 25 Regional Editors and Focal Points around the world to build institutional capacity (scientific editing, coordinate activities in the countries)

We welcome you to



- access RHL on Internet and CDROM

FREE for anyone in all
developing countries

- subscribe to the mailing list **email: rhl@who.int**
- learn more about RHL



<http://www.rhlibrary.com>

RHL @10

27 – 29 April 2007

Khon Kaen

Thailand



RHL @ 10 Key Topics

- RHL and future perspectives
- best practices on current topics in sexual and reproductive health care
- publishing research from low- and middle-income countries
- evidence-based advocacy: The Lancet Sexual and Reproductive Health Series
- Education and training in evidence-based health care
- Utilizing research findings in resource-poor settings.