

# Internet Based Multicenter Studies

(internet-accessible database)

Shawn Koppenhoefer

Postgraduate Training in Reproductive Health Research

Faculty of Medicine, University of Yaoundé 2007

# What service do we provide ?

- An intuitive web-accessible application built on your data-collection forms
  - Add, edit, examine, share, and modify data.
  - View up-to-date statistical analysis based on your current data. Graphs are in real-time.
  - Export the data as Excel format files.
- Secured login, tracking and audit on per-user and per-site (IP) basis
- Backup and daily consistency checks
  - The stored data is backed up on a daily basis.
  - Internal data consistency checks are performed automatically.



Security Access Login

User ID

Password

Submit

Data **918182** New Patient Statistics Resources

The following data has been entered for patientID 41 (history number 918182)

### CURRENTLY STORED DATA

#### Patient Characteristics

Patient History Number	<input type="text" value="918182"/>
Patient INITIALS	<input type="text" value="LKL"/>

Fill in the following form and then click on the Submit button at the bottom of the page

**DATA SUBMISSION FORM**

Patient characteristics

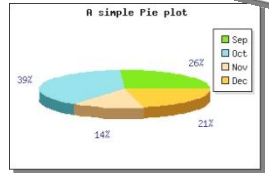
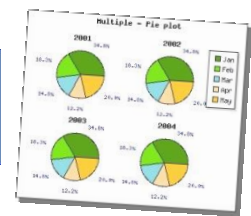
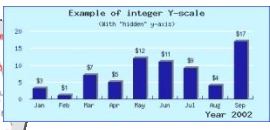
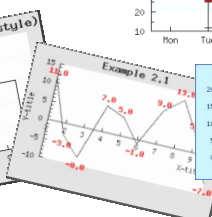
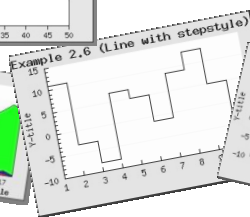
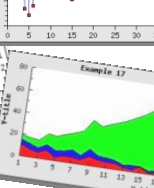
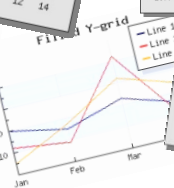
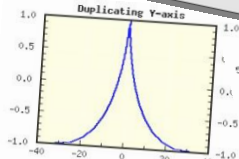
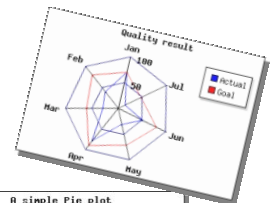
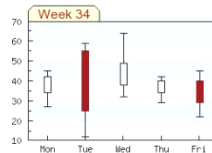
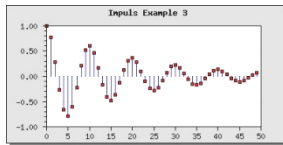
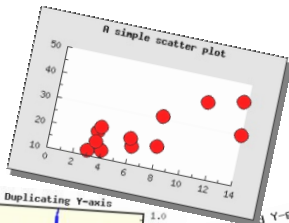
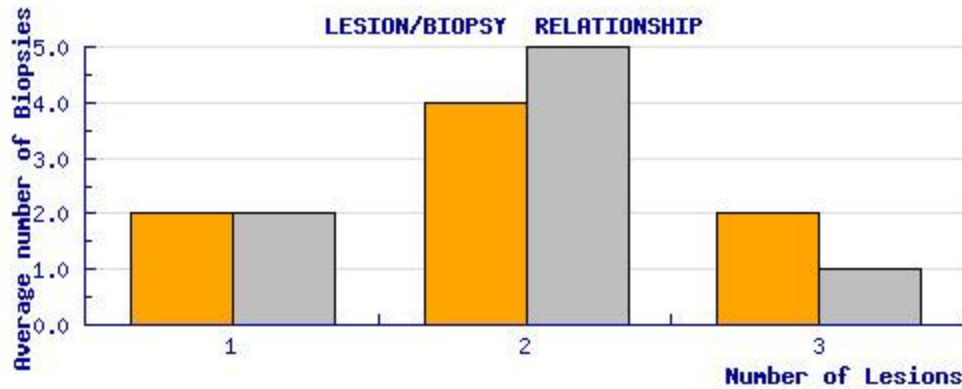
Patient history number	<input type="text"/> <span style="float: right;">i</span>
Patient initials	<input type="text"/> e.g., John Edwin Doe -> JED <span style="float: right;">i</span>
age	<input type="text"/> years
para (number of births)	<input type="text"/>
gestation (number of pregnancies)	<input type="text"/>
body weight	<input type="text"/> kg

Previous treatments - surgical treatment of the gynecological organs

Previous surgical treatment of ovarian cancer?	<input type="radio"/> yes <input type="radio"/> no <input type="radio"/> unknown
Previous hysterectomy with bilateral adnexectomy and omentectomy?	<input type="radio"/> yes <input type="radio"/> no <input type="radio"/> unknown if 'no' then describe: <input style="width: 100%; height: 40px;" type="text"/>
Previous chemotherapy?	<input type="radio"/> yes <input type="radio"/> no <input type="radio"/> unknown
Previous other treatments?	<input type="radio"/> yes <input type="radio"/> no <input type="radio"/> unknown if 'yes' then describe: <input style="width: 100%; height: 20px;" type="text"/>

**CURRENT SUMMARY OF RESULTS**

	Total number of lesions counted	Average number of lesions per patient	Average number of Positive histopathology
WHITE LIGHT	92	2.24	1.83
BLUE LIGHT	75	1.83	1.56



# 'meta' data : data about your data

Database activity			
	Entries since January 1	Entries this week	Entries today
Bellevue Hospital Center	1		
Creighton Medical Center	1	1	
Geneva	1		
Hackensack University Medical Center	1		
Jefferson Medical Center	1		
St. Joseph Medical Center	2		
<i>all centers :</i>	7	1	0



# The End!

- It's easy to use.
- GFMER is able to adapt the system to your needs.
- Security is taken into account at multiple levels.
- We are currently looking into using digital-pen based data-entry.
- More information?

Dr. Shawn Koppenhoefer

email: [shawn.koppenhoefer@gfmer.org](mailto:shawn.koppenhoefer@gfmer.org)

skype: « koppenhoefer »



# Other Technologies

- GFMER Sexual Health Research Forum
  - <http://www.gfmer.ch/Forums/sexualhealthresearch/index.php>
- LinkedIn – [www.linkedin.com](http://www.linkedin.com)
- Skype – [www.skype.com](http://www.skype.com)

# Sexual Health Research Forum

- <http://www.gfmer.ch/Forums/sexualhealthresearch/index.php>
- A forum for professionals working in sexuality and sexual health research.
  - Discussion on research aspects of sex, sexual health, sexuality, reproductive health and rights, sexual identity and orientation, gender identity and its disorders, puberty and adolescence, psychopathologies of sex and sexual dysfunctions.

# REGISTER (and participate)

Geneva Foundation for Medical Education and Research

Languages

Home

Foundation

Search

Education

Partners

Publications

Databases, links

Navigation



## Sexual Health Research Forum - Robert Thomson, Moderator

A forum for professionals working in sexuality and sexual health research, supported by the Fonds universitaire Maurice Chalméau, Geneva.

Discussion on research aspects of sex, sexual health, sexuality, reproductive health and rights, sexual identity and orientation, gender identity and its disorders, puberty and adolescence, psychopathologies of sex and sexual dysfunctions.




[Help](#) [Search](#)  [Register](#)  
 [Log in](#)

Forum	Topics	Posts	Last Post
<b>DISCUSSIONS</b>			
<a href="#">Introduction</a> The scope and purpose of the sexual health research forum is described. A discussion area for definitions and their sources is included. An introduction to GFMER is found online at <a href="http://www.gfmer.ch">www.gfmer.ch</a> so that forum participants can benefit from other services of the Foundation.	4	4	Tue Nov 27, 2007 10:21 am <a href="#">nse</a> →
<a href="#">Announcements</a> Announcements for upcoming events, seminars, conferences and online gatherings may be made here. You may launch calls for papers or suggest interesting sites and online resources.	1	3	Thu Nov 15, 2007 5:21 pm <a href="#">RobertThomson</a> →
<a href="#">Sexual and erotic maturity</a> What are the biomedical and psychological developmental tasks to be achieved in childhood, adolescence and adulthood on the way to human sexual and erotic maturity?	4	6	Thu Nov 22, 2007 11:34 am <a href="#">peng</a> →

## Example Forum topic question...

[Index](#) > [Sexual and erotic maturity](#)

### How to make assessment on Sexual Dysfunction?

<a href="#">View previous topic</a> :: <a href="#">View next topic</a>	
Author	Message
<p><b>peng</b></p> <p>Joined: 30 Sep 2007 Posts: 7</p>	<p>□ Posted: Thu Nov 22, 2007 11:34 am    Post subject: How to make assessment on Sexual Dysfunction? <span style="float: right;"> <a href="#">quote</a></span></p> <hr/> <p>When we talk about sexual dysfunction, in general, we make some analysis on the client's own sexual activities with his/her sexual partner(s), such as, how? How many? How long? Etc. But the sexual activities happen between partners, the other side's responding is also very critical, so when we provide counseling or therapy for the clients with sexual dysfunction, we firstly explore their sexuality characters rather than only sex aspects.</p> <p>Hopefully to exchange the experience by case study, and share them with each other, and expect you can provide your thought, your practical action and your creative idea etc.</p>
<p><a href="#">Back to top</a></p>	<p> <a href="#">profile</a>    <a href="#">pm</a></p>
Display posts from previous: <span style="border: 1px solid black; padding: 2px;">All Posts</span> <span style="border: 1px solid black; padding: 2px;">Oldest First</span> <span style="border: 1px solid black; padding: 2px;">Go</span>	

 [new topic](#)

 [new msg](#)

All times are GMT

# Register today and start participating

- <http://www.gfmer.ch/Forums/sexualhealthresearch/>

# Linked In

- [www.linkedin.com](http://www.linkedin.com)
- **an online network of more than 16 million experienced professionals from around the world, representing 150 industries.**
- create a profile that summarizes your professional life. Be found by colleagues, clients, and partners.
- Add more connections by inviting trusted contacts to join LinkedIn and connect to you.
- Your network consists of your connections, your connections' connections, and the people they know, linking you to thousands of qualified professionals.

# Linked In – My login screen

The screenshot shows the LinkedIn homepage for a user named Shawn. The browser address bar displays 'http://www.linkedin.com'. The page features a navigation menu with tabs for Home, People, Jobs & Hiring, Services, Answers, My Profile, and My Contacts. Below the navigation is a search bar with a dropdown menu set to 'People' and a search input field containing the placeholder text 'Enter keyword, name, company or title'. The main content area is titled 'Inbox' and contains several sections: 'Who has viewed my profile?' (8 people in the last 3 months), 'People you may know' (listing Jean Berney, Olivia De Senger, Eliot Phillips, and Ingeborg van Lieshout), and 'Expand your network' (invite friends and colleagues). The 'Network Updates' section is divided into 'Today', 'Yesterday', and 'Last week' categories, listing recent profile changes and new connections.

Linked in Welcome, Shawn [ Sign Out ] Account & Settings | Inbox Expand Your Network

Home People Jobs & Hiring Services Answers My Profile My Contacts

Inbox Get the LinkedIn JobsInsider

Search People Enter keyword, name, company or title Go Advanced Search

### Inbox

**RE: Join my network on LinkedIn** November 27, 2007  
From Maher Hamdi – Archive

### Network Updates

Today

- Robert Thomson** has a new profile photo
- Robert Thomson** has just added 1 new connection

Yesterday

- Lisa Brunner** has just added 1 new connection
- Thierry Jayet** has just added 1 new connection
- Simon Leinen** has just added 1 new connection
- Ken Warkentyne** has just added 13 new connections

Last week

- Christopher Fuhrman** has a new profile photo
- Maher Hamdi** (Head of Professional Services Operations - Orange Business Services) is now a connection.

### Who has viewed my profile?

Your profile has been viewed by **8** people in the last **3 months**.  
In the last **month**, you've appeared in search results **38** times.  
[See who has viewed your profile](#)

### People you may know

- Jean Berney at Sustainable Business Associates (SBA)
- Olivia De Senger at Fidelio Entertainment Management & Veranstaltungen GmbH
- Eliot Phillips at Weblogs, Inc.
- Ingeborg van Lieshout at Bright / BrightLive

**Expand your network**  
Invite friends and colleagues

- Follow your contacts' contacts

# Clicking on your contacts reveals their current state... and THEIR contacts

**Robert Thomson** 1<sup>st</sup>  
Regional Adviser at United Nations  
Bern Area, Switzerland



Recommend this person  
Send a message NEW!  
Download vCard

**Profile** | **Connections**

**Current** • **Regional Adviser at United Nations**

**Past** • Regional Adviser at UNFPA

**Education** • Saint Mary's College, Fenham  
• University of Durham

**Connections**  5 connections

**Industry** International Affairs

**Public Profile** <http://www.linkedin.com/pub/4/72b/130>

---

 **Experience**

**Regional Adviser**  
**United Nations**  
(Hospital & Health Care industry)  
Currently holds this position  
Recommend Robert's work at United Nations

**Regional Adviser**  
**UNFPA**

**Robert's Connections (5)**

**Garrett Dorer**  
Senior Development Consultant/Middle East Specialist

**Denis Favez**  
PhD Student at EPFL

**Shawn Koppenhoefer**  
Director Medical Informatics - teaching & research in Geneva

See all 5 connections »



# Learn about your colleagues contacts

## Robert's Connections (5)

**REC** = Robert has recommended this person

### New Connections

#### Daniyar Tulendinov

Central Analyst at Euromonitor International

### All Connections

#### **Garrett Dorer**

Senior Development  
Consultant/Middle East Specialist

#### **Denis Favez**

PhD Student at EPFL

#### **Shawn Koppenhoefer**

Director Medical Informatics -  
teaching & research in Geneva

#### **Akiko Takai**

Programme Coordinator on HIV/AIDS  
at UNFPA

#### **Daniyar Tulendinov**

Central Analyst at Euromonitor International

# Search for keywords e.g., « sexual health »

## People Search Results

We found 20 users in your network matching your criteria:

• Keywords: **sexual health** • Sorted by: **keyword relevance**

[▶ refine search results](#)

**YOUR NETWORK** (20)

LINKEDIN NETWORK (TOP 20)

[What do these icons mean?](#)

### [Edwige Faydi](#)

Public Health Specialist and Medical Anthropologist  
Geneva Area, Switzerland | Hospital & Health Care

3<sup>rd</sup>



4

**Past:** London Schol of Hygiene and Troical Medicine; Hanoi Family Medical... [see more](#)

**Keywords:** Mental **health** Reproductive and **Sexual Health** ... and **Sexual Health** ... International Public **Health**; Reproductive and **Sexual Health** Research ...

### [Bev Auton, PHR](#)

HR Business Partner/HR Management/Recruiter  
San Francisco Bay Area | Human Resources

3<sup>rd</sup>



4

127

**Past:** On Point Staffing; Auton HR Consulting\*; Wolfe Engineer;... [see more](#)

**Keywords:** ... building, supervisor training, **sexual** ... **BENEFITS:** Negotiate, enhance, communicate and administrate all employee benefits. (**Health**, EAP, Worker's Comp, 401k, etc ... , Enhanced employee **health** benefits ... and presented training on **sexual** ...

**Groups:** HUMAN CAPITAL INSTITUTE

# Skype – internet telephony

What is Skype ?

-Skype allows users to make telephone calls from their computer to other Skype users free of charge

-Additional features include instant messaging, file transfer, short message service, video conferencing and its ability to circumvent firewalls.

-Download and register : [www.skype.com](http://www.skype.com)

-Skype me! « koppenhoefer »

