

European Group of Robotic Urology



Status Report on the European Data Base

Ch.H. Rochat

**EGRU 2007,
Bruxelles**

EGRU

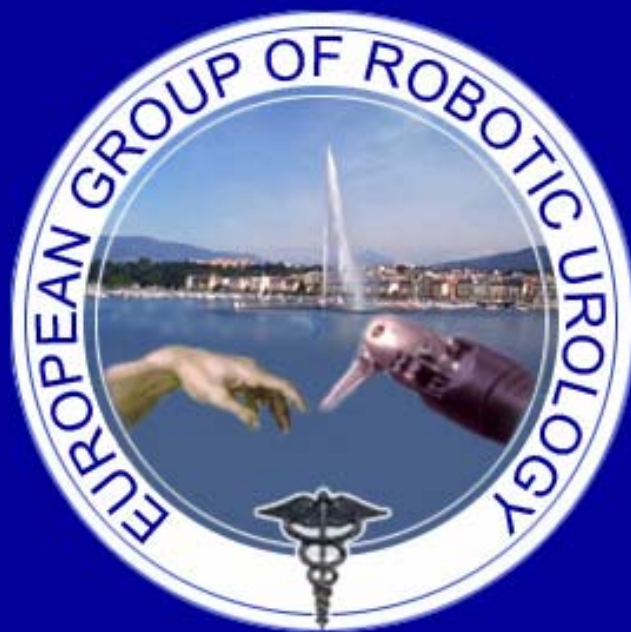
- Created November 18, 2005 in Paris, located in Geneva
- Members of the Committee :

Thierry PIECHAUD	Bordeaux	France	President
Peter WIKLUND	Stockholm	Sweden	Vice-President
Xavier CATHELINEAU	Paris	France	Scientific Secretary
Walter ARTIBANI	Padua	Italy	Treasurer
Charles-Henry ROCHAT	Geneva	Switzerland	Secretary General
Hubert JOHN	Zurich	Switzerland	Secretary
Aldo CAMPANA	Geneva	Switzerland	Scientific Advisor

Objectives of EGRU (Statutes)

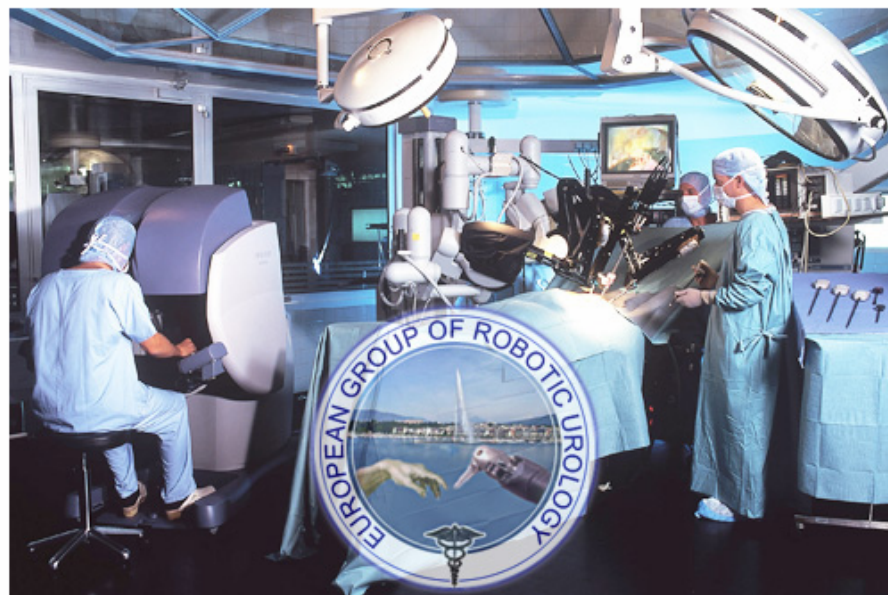
- to promote the meeting of the persons involved in professional activity related to research and/or clinic in robotic urology surgery
- to support research activities
- to offer and promote theoretical and practical training
- to manage a clinical database for scientific analyses and prospective studies
- to organize and participate in congresses, workshops, symposiums and conferences at national and international levels
- to contribute to publication and information through different medias (scientific journals, Internet) and to manage its website
- to establish contacts and collaboration by participating in any initiative useful to its objectives at national and international levels
- to undertake any other measure aiming at pursuing and achieving its goals

European Group of Robotic Urology



Groupe Européen de Robotique en Urologie

European Group of Robotic Urology



The European Group of Robotic Urology (EGRU) was created during the European Congress of Robotic Surgery held in February 2005 in Geneva. The official constitutions were drawn up on 18 November 2005. EGRU is hosted by the Geneva Foundation for Medical Education and Research.

Objectives

The objectives of EGRU are:

- to promote education, research and development in urologic robotic surgery
- to build a network of European urologic centres equipped with an operational robot system (DA VINCI). Urologists of these centres collaborate with one another by sharing their technical experiences and by participating in multicentre clinical studies
- to provide practical training in urologic robotic surgery

Members of the Committee

- Thierry Piéchaud, Bordeaux (France) - President
- Peter Wiklund, Stockholm (Sweden) - Vice-President
- Charles-Henry Rochat, Geneva (Switzerland) - Secretary General
- Xavier Cathelineau, Paris (France) - Scientific Secretary
- Walter Artibani, Padua (Italy) - Treasurer
- Aldo Campana, Geneva (Switzerland) - Scientific Advisor

European Group of Robotic Urology

Internet based clinical trial of robotically assisted laparoscopic prostatectomy

Clinical trial objectives

The goals of the clinical study are the following :

- clinical study on the practice of robotically assisted laparoscopic prostatectomy for the treatment of localized prostate cancer.

Security Access Login	
User ID	<input type="text"/>
Password	<input type="password"/>
<input type="button" value="Submit"/>	

Description of the Internet Database

The Geneva Foundation for Medical Education and Research (GFMER) has developed a web application composed of web oriented interface that is informatically connected to a database. The goal of the web forms and the database is to allow the collection and evaluation of data as it pertains to the study of clinical practices of robotically assisted laparoscopic prostatectomy for the treatment of localized prostate cancer.

The system allows a multi centric administration and management of data, and allows multiple users. An easy access to the collected data has been made possible using the search capabilities of this tool. Statistical analysis is presented both in text form and graphical charts; The statistics are updated in real-time so that they accurately reflect the latest data that has been collected.

The database itself is secured in terms of user access, authentication level, auditing / logging of processes and actions, and preservation of anonymity where required. Authorized users are able see data that has been entered into the system and to export that data in a form that is readable by Microsoft Excel or other statistical analysis software. The core database application is coordinated by GFMER in collaboration with recognized international experts.



Meeting calendar 2006

Meeting	Date	Location
Pacific Rim Robotics Symposium	January 6-7, 2006	Anaheim, CA
Southeastern Section of the AUA Meeting	March 2-5, 2006	Puerto Rico
European Association of Urology (EAU) Meeting	April 5-8, 2006	Paris, France
World Robotic Urology Symposium	May 13-15, 2006	Columbus, OH
American Urological Association (AUA) Annual Meeting	May 20-25, 2006	Atlanta, GA
Cornell ART (Adv. Robotic Techniques)	June, 2006	NY, NY
24th World Congress of Endourology	August 17-20, 2006	Cleveland, OH
World Congress of Endoscopic Surgery (EAES)	September 13-16, 2006	Berlin, Germany
ERUS (European Robotic Urology Symposium)	September, 2006	Stockholm, Sweden
South Central Section AUA Annual Meeting	October 4-8, 2006	Santa Fe, New Mexico
IRUS (International Robotic Urology Association)	October, 2006	Dearborn, MI
Western Section AUA Annual Meeting	October 22-27, 2006	Maui, Hawaii

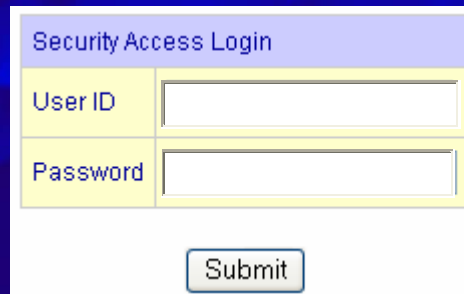
☒ Web ☐ www.gfmer.ch

[Print this page](#)

Geneva Foundation for Medical Education and Research (GFMER)

Internet Data Base

- web oriented interface connected to a data base
- study of clinical practices of DVP
- Multicenter / multiple users
- real time statistics
- acces and anonymity secured (users/patients)

A screenshot of a web-based login form titled "Security Access Login". The form has a light blue header bar with the title. Below the header, there are two input fields: "User ID" and "Password", each with a yellow border. A "Submit" button is located at the bottom of the form.

Security Access Login	
User ID	<input type="text"/>
Password	<input type="password"/>
<input type="button" value="Submit"/>	

European Multicenter dVP Study (EMdS)

Currently no European collaborative multicenter prospective studies investigating 3 main outcomes of DVP exist:

- cancer control
- urinary continence
- sexual function

European Multicenter dVP Study (EMdS)

➤ Participating centers

Clinique St Augustin	Bordeaux	T. Piechaud
Clinique Générale Beaulieu	Geneva	C.-H. Rochat
Karolinska Universitetsjukhuset	Stockholm	P. Wiklund
Policlinico Universitario di Padova	Padova	W. Artibani
Azienda Ospedaliera Luigi Sacco	Milano	F. Gaboardi
Institut Mutualiste Montsouris	Paris	X. Cathelineau
La Pitié-Salpêtrière	Paris	C. Vaessen
Onze Lieve Vrouw Ziekenhuis	Aalst	A. Mottrie
Chu de Nancy Brabois	Vandoeuvre les Nancy	L. Cormier
Det Norske Radium Hospital	Oslo	B. Brennhoved
Hirslanden Klinik	Zürich	H. John

European Multicenter dVP Study (EMdS)

Urinary continence

- Validated self- administered questionnaires (multilingual)
- ICIQ score

Questionnaire H1

European Multicenter dVP Study (EMdS)

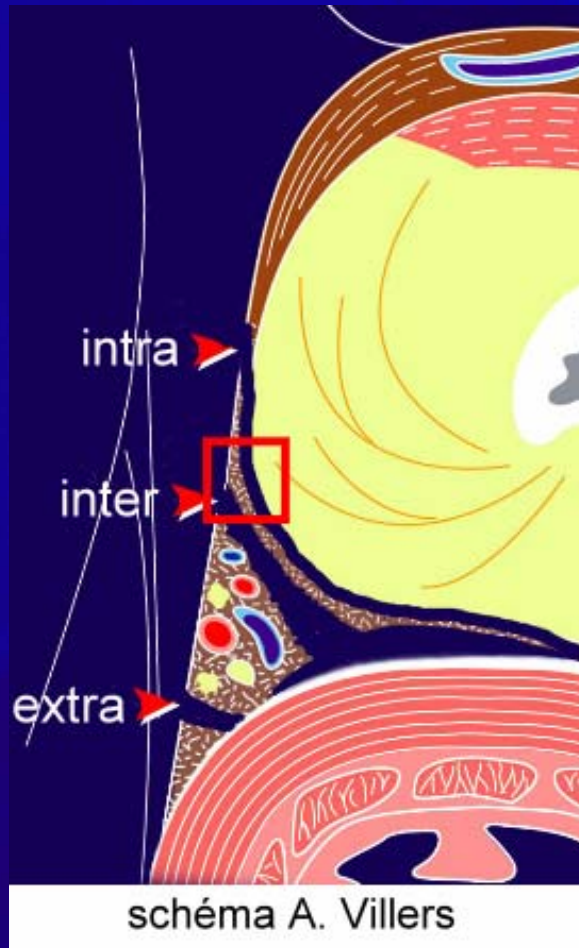
Sexual function

- Pre and post operative validated self questionnaires (multi language)
- IIEF 5 score

Questionnaire H2

European Multicenter dVP Study (EMdS)

Detailed surgical dissection

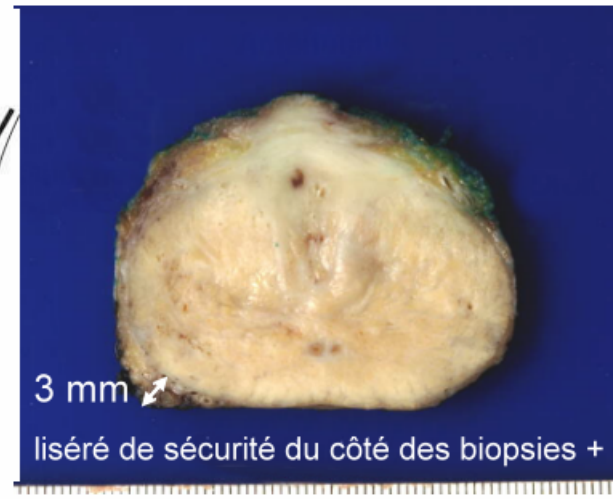
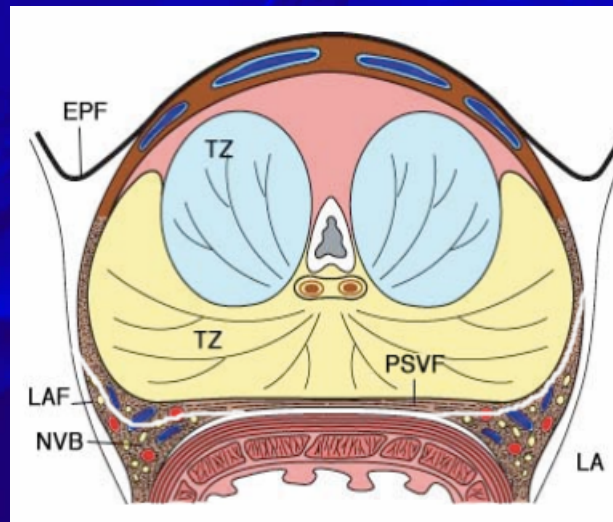
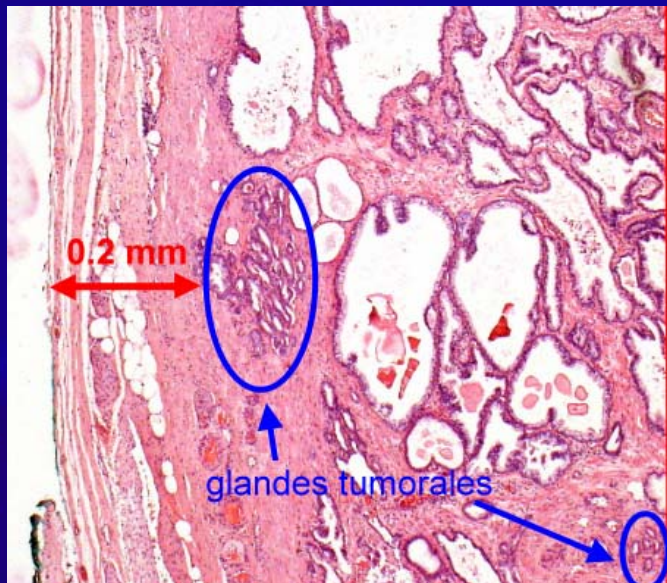


INTRA-operative

European Multicenter dVP Study (EMdS)

Detailed margins status/pathologic stage

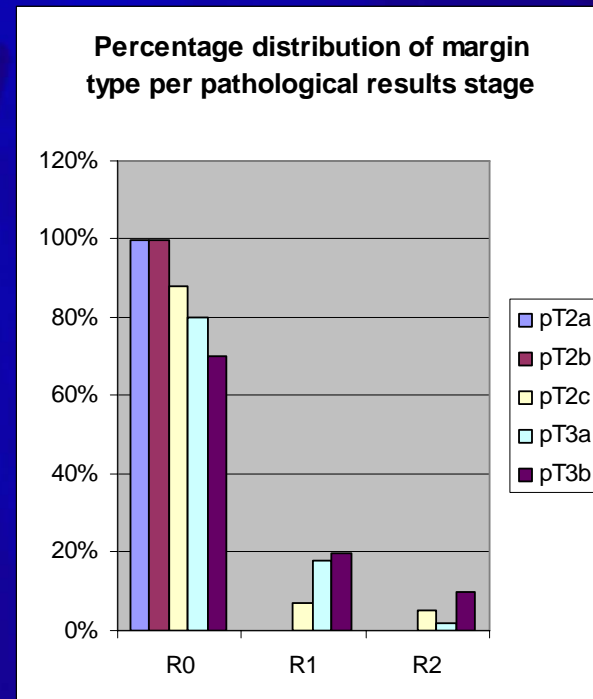
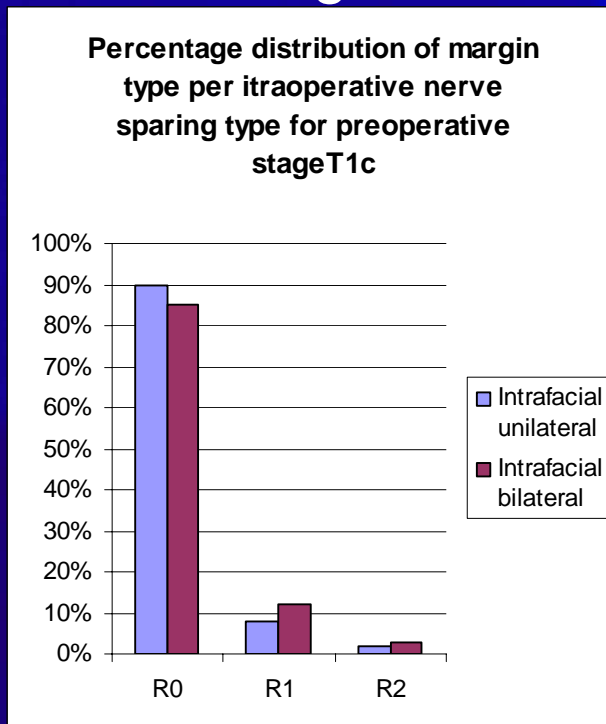
Pathological results



European Multicenter dVP Study (EMdS)

margins status/pathologic stage

- Location
- Quantification of Margin Status
- Relation to Stage



European Multicenter dVP Study (EMdS)

- Coordinators T. Piéchaud and C.-H. Rochat
- 1st Inclusion period : Sept 2006 –Sept 2007
- Data management : GFMER
- Each participant is free to analyse and utilise his owns data
- Publications through scientific committee of EGRU
- Independent from Intuitive Surgical
- First presentation . EAU meeting , Milan 2008

CONCLUSIONS

FUTURE DEVELOPMENTS

➤ ORGANISATION OF EGRU :

- Acceptance of new members :
 - Ordinary members
 - Corresponding members
 - Supporting members
- National organisation of robotic groups
- National representants in EGRU council
- Reflexions about representation of EGRU in EAU

EGRU

FUTURE DEVELOPMENTS

➤ SCIENTIFIC ORGANISATION :

- NEW MULTICENTRIC DATA BASE
 - Partial nephrectomy
 - Radical cystectomy
 - Genito urinary prolapse
- ANNUAL MEETING
- ANNUAL SESSION IN EAU MEETING



EGRU

secretariat@egru.ch