

Introduction to Household Surveys

Khin Win Thin
RHR\TCC

Training Course in Reproductive Health/Sexual Health Research
Geneva 2008



World Health Organization



Reproductive Health and Research



UNDP • UNFPA • WHO • World Bank
Special Programme of Research, Development
and Research Training in Human Reproduction

Type of Studies

- **Observational**
 - Retrospective: Case-control
 - Prospective: Cohort
 - Cross-sectional: Surveys
- **Interventions**
 - Clinical trials
 - Community or CRT trials



Why a HH survey?

- Important source of socio-economic data
- Provides information to monitor development policies
- In developing countries and transition economies, supplements or sometimes even replace other data collection programmes and civil registration systems



Ongoing HH surveys

HH surveys conducted by international agencies

- **Demographic and Health Surveys (DHS), by ORC Macro for the USAID**
- **Living Standards Measurement Study (LSMS) surveys with technical assistance from the World Bank**
- **Multiple Indicator Cluster Surveys (MICS) by UNICEF**
- **World Health Survey by WHO**



World Health Organization



Reproductive Health and Research



UNDP • UNFPA • WHO • World Bank
Special Programme of Research, Development
and Research Training in Human Reproduction

Demographic & Health Surveys (DHS)

Household Questionnaire

Listing of household members, household characteristics, nutritional status and where appropriate, anemia, malaria, and HIV

Women's Questionnaire

Reproductive behavior and intentions; Sexual behavior; Contraception; Antenatal, delivery, and postpartum care; Breastfeeding and nutrition; Children's health; Status of women; AIDS and other sexually transmitted infections; Husband's background

Men's Questionnaire

- Background characteristics; Reproductive and Sexual behavior; Knowledge and use of contraception; Employment and gender roles; AIDS and other sexually transmitted infections; and other health issues



World Health Organization



Reproductive Health and Research



UNDP • UNFPA • WHO • World Bank
Special Programme of Research, Development
and Research Training in Human Reproduction

Multiple Indicators Cluster Surveys (MICS)

- **Household:**

Education, child labour, water and sanitation, salt iodization, insecticide-treated mosquito nets, and support to children orphaned and made vulnerable by HIV/AIDS, with optional modules for disability, child discipline, security of tenure and durability of housing and maternal mortality.

- **Women:**

Child mortality, tetanus toxoid, maternal and newborn health, marriage/union, contraceptive use, HIV/AIDS knowledge, malaria, polygyny, female genital cutting, and sexual behavior, with optional modules for unmet need, security of tenure, and attitudes toward domestic violence.

- **Children:**

Birth registration and early learning, vitamin A, breastfeeding, care of illness, malaria, immunization, and anthropometry, with optional modules for child development, and source and cost of supplies of ORS, antibiotics and antimalarias.

WHO World Health Surveys (WHS)

Modules

Household Questionnaire

- Roster
- Long-term care and institutionalization
- Household Health coverage (malaria)
- Insurance
- Indicator of permanent income (assets)
- Health Expenditure
- Health Occupations

Individual Questionnaire

- Socio Demographics
- Health State Description
- Health State Valuation
- Risk Factors
- Mortality
- Coverage
- Health System Responsiveness
- Health System Goals and Social Capital
- Interviewer Observations



World Health Organization



Reproductive Health and Research



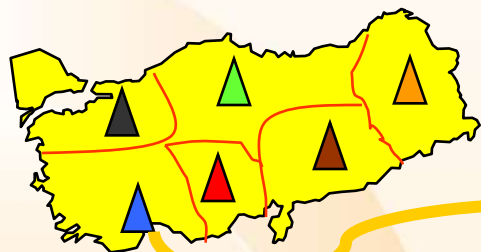
UNDP • UNFPA • WHO • World Bank
Special Programme of Research, Development
and Research Training in Human Reproduction

Overview of household surveys

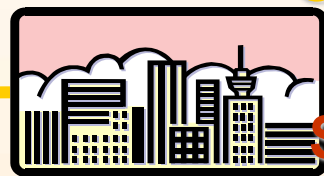
- Sample design
- Survey implementation
- Non-sampling errors
- Survey costs
- Analysis of survey data



WHS Sampling-Multistage Clusters



Provinces-
Strata



Counties - PSU s
Primary
Sampling Units

Enumeration Areas - SSUs Second
Stage Units



Households – TSUs
Third Stage Units



Respondent



World Health Organization



Reproductive Health and Research



UNDP • UNFPA • WHO • World Bank
Special Programme of Research, Development
and Research Training in Human Reproduction

Key words

- Sampling frame
- Target population
- Stratification
- Clustering
- Primary sampling unit
- Probability sampling
- Randomness



Survey implementation

- Financing & Budget
- Work plan
 - Timeline
 - Field work logistics
 - Data entry logistics
- Develop instruments
- Drawing a sample of household
- Training manuals and training of enumerators
- Pilot test
- Publicity campaign



Factors influencing sample size

- Precision of surveys estimates
- Data quality
- Cost and timeliness



World Health Organization



Reproductive Health and Research



UNDP • UNFPA • WHO • World Bank
Special Programme of Research, Development
and Research Training in Human Reproduction

Sample selection

- 2 Main Components

- ① Selection of Households From Sampling Unit

- ② Selection of Individuals From Households



World Health Organization



Reproductive Health and Research



UNDP • UNFPA • WHO • World Bank
Special Programme of Research, Development
and Research Training in Human Reproduction

Non-sampling errors

- Non-Coverage
- Non-response
- Measurement
 - Questionnaire
 - Data collection mode
 - Interviewer
 - Respondent



Survey cost

- Survey design
- Preparatory activities
 - Advocacy meetings
 - Training
 - Questionnaires & manuals
- Data collection and field work
 - Personnel
 - Transport
 - Equipments & consumables
- Data analysis
- Results disseminations
 - Printing
 - Seminars



Analysis of Survey Data

- Define tabulation plan
- Indicators:
 - Numerators
 - Denominators
- Adjustments
 - weights



- Indicators**
- Health
 - Mortality
 - Health
 - Responsiveness
 - Financing
 - Health System Functions
 - Coverage
 - Composite Goals

POLICY QUESTIONS

RESEARCH QUESTIONS

WHR
Statistical Annexes

Country Reports
 Short Report
 Detailed Report
 Policy Report

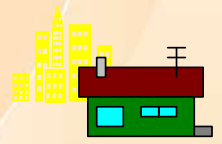
World Health Survey

- Instrument design**
- ✓ Measurement Properties
 - ✓ Scales
 - ✓ Reliability
 - ✓ Cultural comparability

Quality Assurance

- Statistics**
- ✓ Descriptive
 - ✓ Multivariate
 - ✓ Hypothesis Testing

Quality Assurance



- Implementation**
- ✓ Sampling
 - ✓ Training
 - ✓ Fieldwork
 - ✓ Site Visits

Quality Assurance



- Data**
- ✓ Editing & entry
 - ✓ Checks
 - ✓ Cleaning & Filing
 - ✓ Missing Data
 - ✓ Archiving

Quality Assurance



World Health Organization

Reproductive Health and Research



UNDP • UNFPA • WHO • World Bank
 Special Programme of Research, Development
 and Research Training in Human Reproduction

Information for data users

- DHS

<http://www.measuredhs.com/>

- MICS

<http://www.childinfo.org/index.htm>

- WHS

<http://www.who.int/healthinfo/survey/en/>

- UNSD

<http://unstats.un.org/unsd/hhsurveys/>



World Health Organization



Reproductive Health and Research



UNDP • UNFPA • WHO • World Bank
Special Programme of Research, Development
and Research Training in Human Reproduction

Thank you



World Health Organization



Reproductive Health and Research



UNDP • UNFPA • WHO • World Bank
Special Programme of Research, Development
and Research Training in Human Reproduction