

# BROCHURE 2022



## Training Course in Sexual and Reproductive Health Research

### Research methodology and research protocol development

#### Organizers

Geneva Foundation for Medical Education and Research (GFMER) in collaboration with the World Health Organization's (WHO) Department of Sexual and Reproductive Health & Research, World Health Organization (Geneva)

#### Course Duration

21 September – 15 November 2022 (8 weeks)

#### Contact

The Administrative Office  
**Geneva Foundation for Medical  
Education and Research (GFMER)**

Chemin de Beau-Soleil 12  
1206 Geneva, Switzerland.

Email:  
researchmethodology@gfmer.org

Website: <https://www.gfmer.ch>

## About

### **The Geneva Foundation for Medical Education and Research**

The Geneva Foundation for Medical Education and Research (GFMER) is a non-profit organization established in 2002. It is supported by the Department of Social Affairs of the City of Geneva and other Swiss and international institutions.

The Foundation works in close collaboration with the World Health Organization (WHO). The overall objectives of the Foundation are to promote and develop health education and research programs.

## Objective

### **Training course in research methodology and research protocol development 2022**

The objective of this course is to provide knowledge and skills in research methodology and research protocol development to health professionals in sexual and reproductive health field. This course will enhance participants' knowledge of research methodology and how to develop research protocols and improve their scientific writing.

# Training Course in Sexual and Reproductive Health Research

## Research methodology and research protocol development

### **Four thematic areas:**

#### **Literature search and referral to biomedical documents**

The aim of conducting a literature search is to identify the most relevant sources related to a study topic in order to provide evidence, give background information, place research into a theoretical context and inform readers about similar research on the topic. A literature review is crucial for the credibility of a scientific paper and serves as an update of professional knowledge in a particular field of expertise.

Referencing is a standard way of citing the sources of information you have used and ideas that are not your intellectual property. It is important to verify citation and to allow readers to follow-up certain topics in further detail and locate the cited author's original work.

#### **Epidemiologic studies**

This section provides basic knowledge on different epidemiological studies used to conduct research projects. It includes methods for observational (analytic & descriptive) studies, such as cross sectional, cohort, case-control and experimental studies like randomized trials. This section includes both quantitative and qualitative methods for conducting research as well as various data collection methods.

#### **Scientific writing**

This section provides instruction on scientific writing, such as article, report, presentation based on academic criteria.

#### **Research protocol development**

This section provides practical instructions on how to develop a research protocol according to the WHO recommended format.

# Research methodology and research protocol development

## Course Topics

1. Introduction
2. Research topic selection
3. Research question and research problem statement
4. Effective literature search and citing biomedical documents and sources
5. Types of research (Qualitative and Quantitative)
6. Epidemiologic studies
  - 6.1. Observational studies
    - 6.1.1. Cohort
    - 6.1.2. Case-control
  - 6.2. Experimental studies
    - 6.2.1. Randomized controlled trial
  - 6.3. Cross-sectional studies
  - 6.4. Systematic review
7. Implementation research
8. Sampling (sample size and sampling technique)
9. Data collection methods
  - 8.1. Questionnaire
  - 8.2. Interview guide
  - 8.3. Focus Group Discussion
10. Qualitative study design
11. Research Ethics
12. Critical appraisal of research publication
13. Scientific writing
14. Standard research protocol format



Moazzam Ali  
Course coordinator  
WHO HQ (Geneva)

## Course Coordinators

### **Moazzam Ali**

Department of Sexual and Reproductive Health and Research,  
World Health Organization (WHO HQ Geneva)

### **Karim Abawi**

Geneva Foundation for Medical Education and Research (GFMER)



Karim Abawi  
Course coordinator  
GFMER

## The GFMER Team

### **Raqibat Idris**

Course manager  
Geneva Foundation for Medical Education and Research (GFMER)

### **Fionna Poon**

Course administrator  
Geneva Foundation for Medical Education and Research (GFMER)



Raqibat Idris  
Course manager  
GFMER



Fionna Poon  
Course administrator  
GFMER

# GFMER Country Coordinators / Coaches



Afghanistan -  
Homa Kabiri



Bangladesh -  
Ashim Roy



Bhutan -  
Sonam Wangdi



Bolivia -  
Carlos Encinas



Bahrain -  
Maryam Alaradi



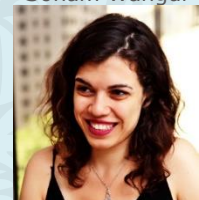
Brazil - Mariana  
Felisbino-Mendes



Burkina Faso -  
Bruno Ki



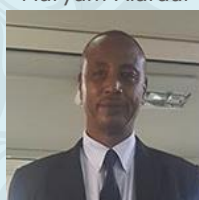
Cameroon - Gregory  
Edie Halle-Ekane



Egypt -  
Nana Abuelsoud



Ethiopia - Melaku  
Samuel Hottessa



Ethiopia - Ambaw  
Damtew Belete



Georgia -  
Lela Shengelia



Gulf Cooperation  
Council - Khadija  
Ahmed Matrook



India - Rathnamala M.  
Desai



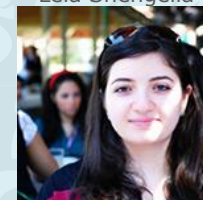
Iran - Shayesteh  
Hajizadeh



Iraq - Hamdia Mirkhan  
Ahmed



Kenya - Peter Otieno  
Khayombe



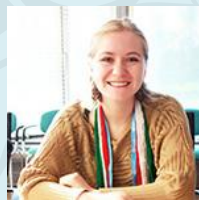
Lebanon -  
Ayah Al Bizri



Malawi -  
Tazirwa Chipeta



MENA Region -  
Amr Awad



Mexico - Atziri  
Ramirez-Negrin



Mozambique -  
Chadreque Muluana



Nepal -  
Anil Thapa



Nigeria - Aishatu  
Abubakar-Sadiq



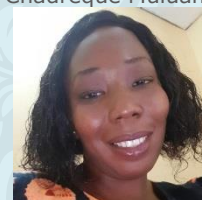
Pakistan -  
Anjum Ara Saeed



Palestine -  
Shoroq Abuhamad



Sudan -  
Khalifa Elmusharaf



South Sudan -  
Joyce Acok Donato



Uganda -  
Morris Okwir



Zambia -  
Namakau Nyambe

In alphabetical order by country



# Eligible Candidates

Health professionals, paramedical staff, project planners and managers in health-related areas, advocates, government officials and social scientists.

# Learning Methods

On each of the topic, the following items will be posted:

1. A set of slides with accompanying talking points
2. Reference documents
3. Other audio-visual materials

## Teaching language

The teaching language of the course is English.

## What is required of you?

For each module, participants must:

- Study the slides and talking points.
- Read all accompanying documents.
- Complete the short assignment / MCQs / interactive exercises, after going through the slide set and documents.

A personal coach will be assigned to each participant, whose role is to facilitate the learning process and serve as tutor.

## Course validation and certificate

In order to validate the module and obtain the certificate, the participants are required to develop a research protocol relevant to their professional practice and under the guidance of their personal coach.

# Admission Procedures

1. Submit the online application form:

[https://docs.google.com/forms/d/e/1FAIpQLScQ90gBE57kBs2zGJ-T6\\_4Xi2AdgAXL6aKlbfRiBlaBRMNaw/viewform](https://docs.google.com/forms/d/e/1FAIpQLScQ90gBE57kBs2zGJ-T6_4Xi2AdgAXL6aKlbfRiBlaBRMNaw/viewform)

2. Submit the following documents that are required to process admission via email (researchmethodology@gfmer.org):

- A curriculum vitae, including sections on current and previous positions.
- A letter of motivation stating clearly your interests and reasons for applying to the Course (1 page maximum).

3. Wait for the acceptance notice from the administrative office.

4. If your application is accepted, settle the course fee before the course commences.

## Important Dates

Start date: 21 September 2022

End date: 15 November 2022

Application deadline: 7 September 2022

Payment deadline: 14 September 2022

## Course Fee

USD 250

## Course Website

<https://www.gfmer.ch/SRH-Course-2022/research-methodology/index.htm>

## Application Form

[https://docs.google.com/forms/d/e/1FAIpQLScQ90gBE57kBs2zGJ-T6\\_4Xi2AdgAXL6aKlbfRiBlaBRMNaw/viewform](https://docs.google.com/forms/d/e/1FAIpQLScQ90gBE57kBs2zGJ-T6_4Xi2AdgAXL6aKlbfRiBlaBRMNaw/viewform)

## Contact

The Administrative Office  
**Geneva Foundation for Medical  
Education and Research (GFMER)**

Chemin de Beau-Soleil 12,  
1211 Geneva 2, Switzerland.

Email: [researchmethodology@gfmer.org](mailto:researchmethodology@gfmer.org)

Website: <https://www.gfmer.ch>